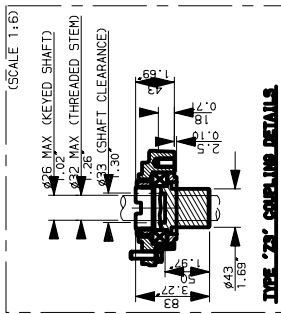
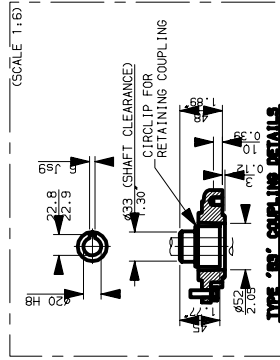


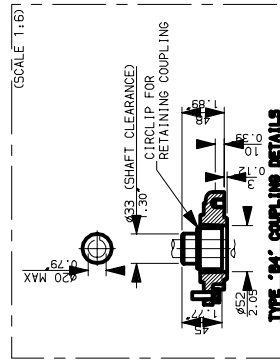
TYPE 'A' COUPLING DETAILS



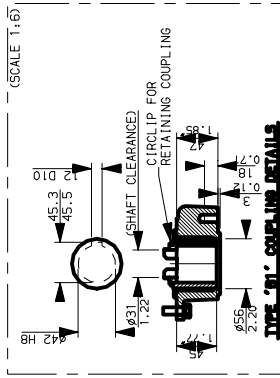
TYPE '73' COUPLING DETAILS



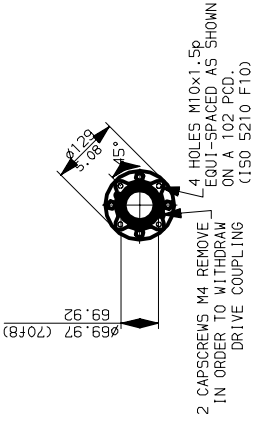
TYPE '81' COUPLING DETAILS



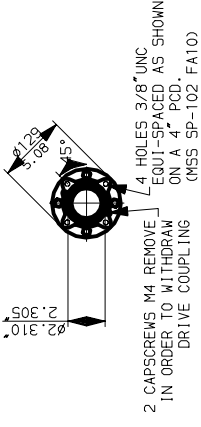
TYPE '84' COUPLING DETAILS



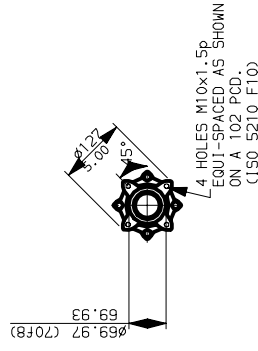
TYPE '91' COUPLING DETAILS



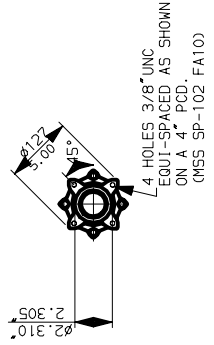
F10 BASE DETAILS FOR 'A' & '7' COUPLINGS



FA10 BASE DETAILS FOR 'A' & '7' COUPLINGS



F10 BASE DETAILS FOR 'B' COUPLINGS

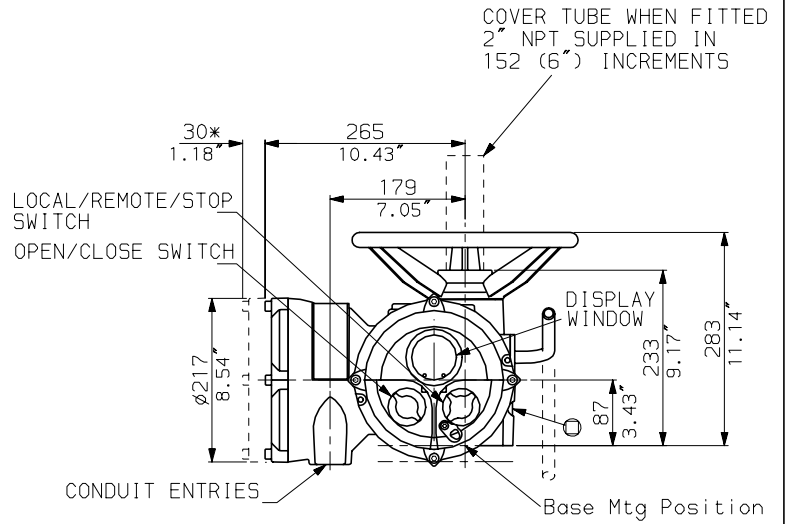
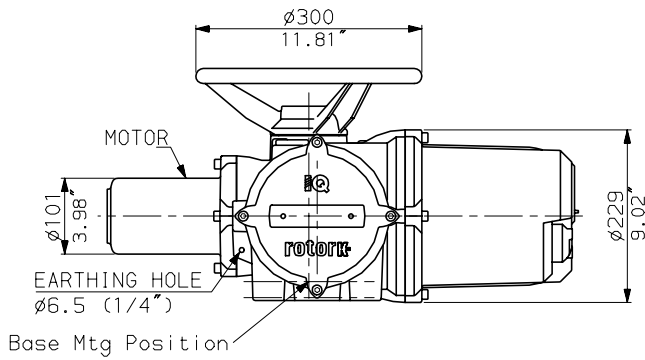
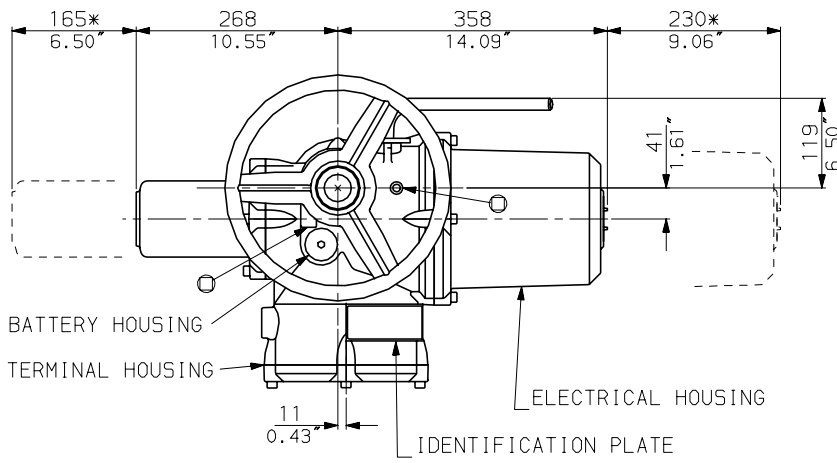


FA10 BASE DETAILS FOR 'B' COUPLINGS

1Q10-18 THRUST BASES

1Q10-18 NON-THRUST BASES

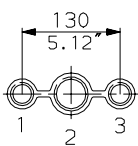
IQ10-18 WITH
STANDARD HANDWHEEL



NOTES

Three BASE options are detailed to suit the relevant Coupling arrangement. The required BASE for the SIDE & END views should be loaded to position indicated. (The B4 base cannot be seen due to the conduit entries).

CONDUIT ENTRIES



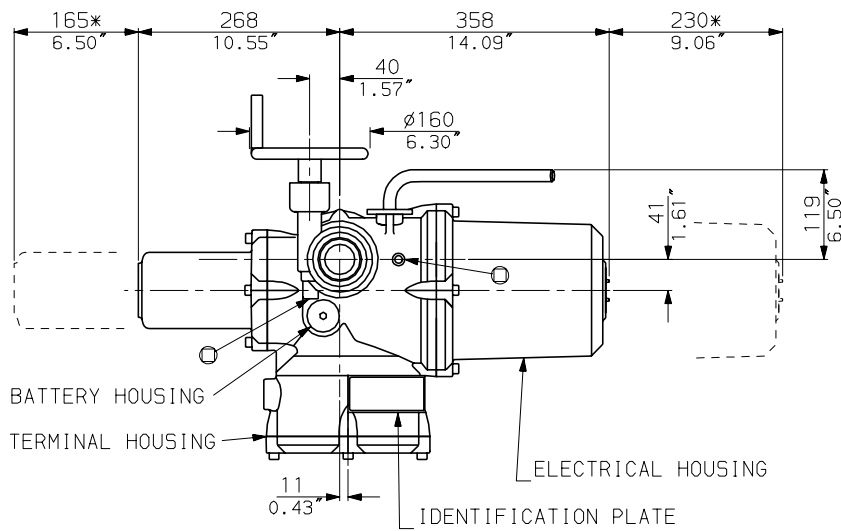
Nos.1 & 3 TAPPED 1" NPT
No.2 TAPPED 1 1/2" NPT
STANDARD ALTERNATIVES IF SPECIFIED
2 X M25, 1 X M40
2 X PG16, 1 X PG29

rotork

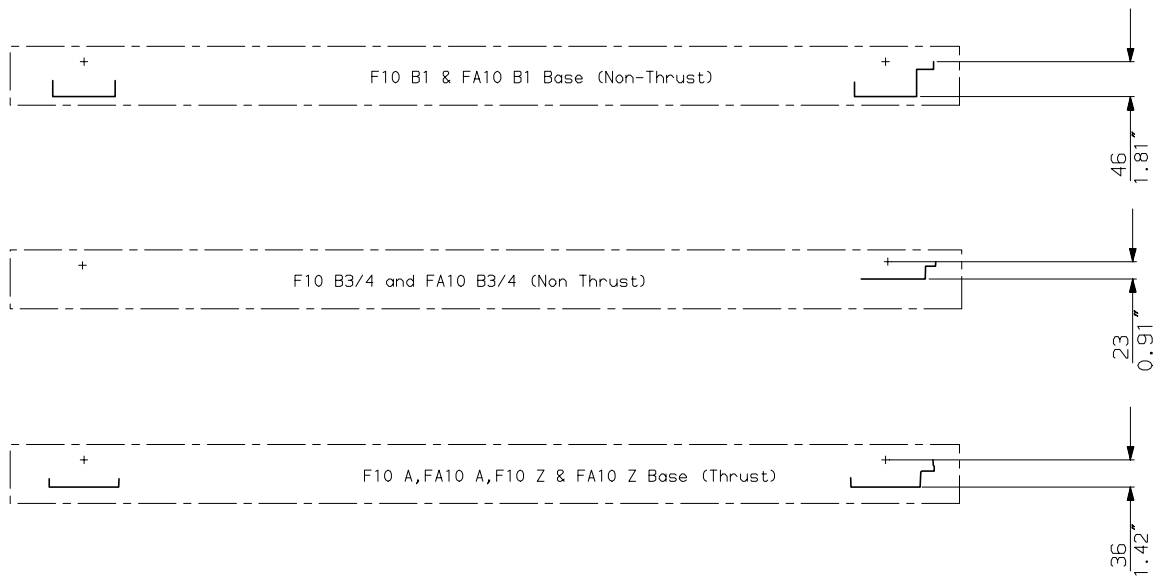
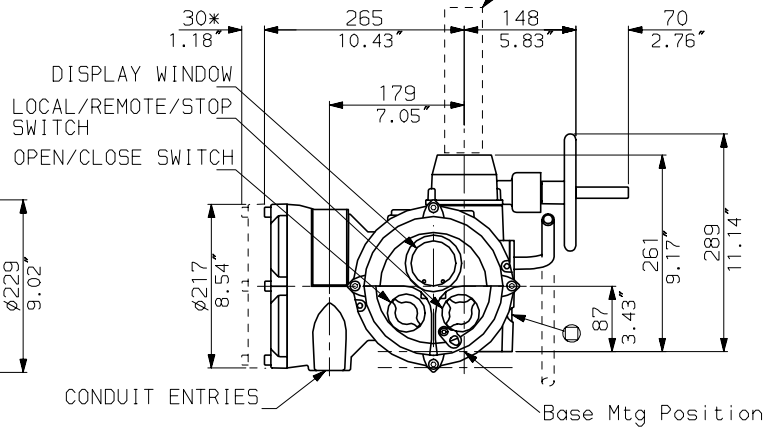
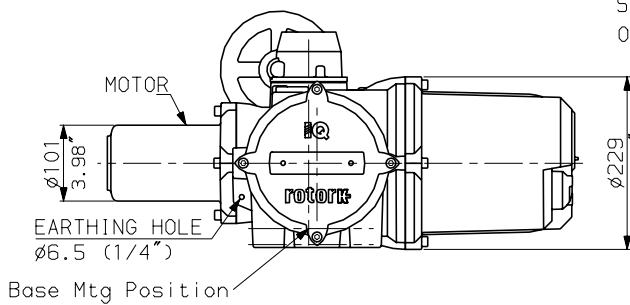
IQ10 (THW) DATA

Date 300301 Scale 1:10

IQ10-18 WITH OPTIONAL
SIDE HANDWHEEL



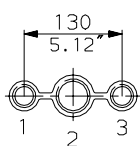
COVER TUBE WHEN FITTED
2" NPT SUPPLIED IN
152 (6") INCREMENTS



NOTES

Three BASE options are detailed to suit the relevant Coupling arrangement. The required BASE for the SIDE & END views should be loaded to position indicated. (The B4 base cannot be seen due to the conduit entries).

CONDUIT ENTRIES



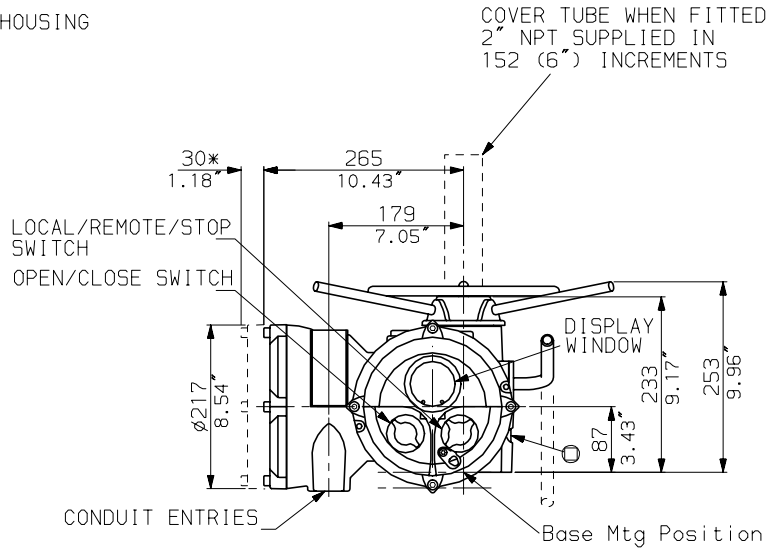
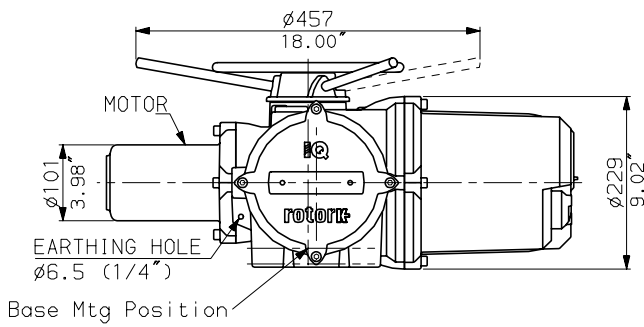
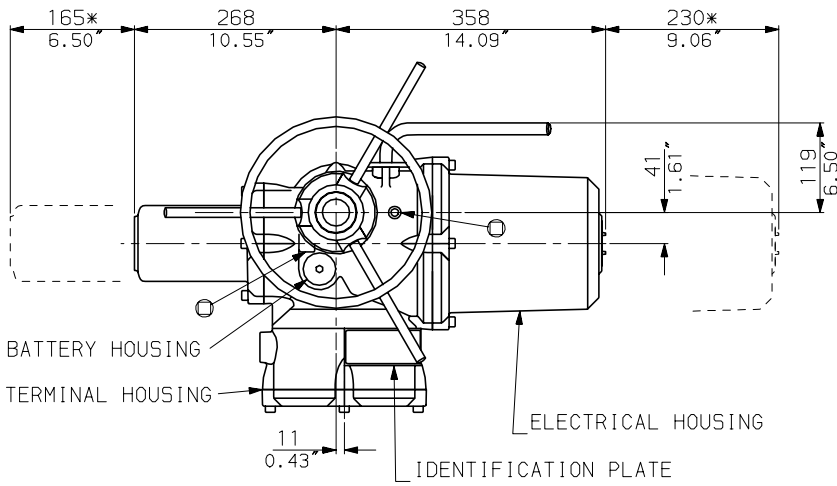
Nos.1 & 3 TAPPED 1" NPT
No.2 TAPPED 1 1/2" NPT
STANDARD ALTERNATIVES IF SPECIFIED
2 X M25, 1 X M40
2 X PG16, 1 X PG29

rotork

IQ10 (SHW) DATA

Date 300301 Scale 1:10

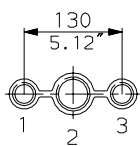
IQ10-18 WITH OPTIONAL
LARGE TOP HANDWHEEL



NOTES

Three BASE options are detailed to suit the relevant Coupling arrangement. The required BASE for the SIDE & END views should be loaded to position indicated. (The B4 base cannot be seen due to the conduit entries).

CONDUIT ENTRIES



Nos.1 & 3 TAPPED 1" NPT
No.2 TAPPED 1 1/2" NPT
STANDARD ALTERNATIVES IF SPECIFIED
2 X M25, 1 X M40
2 X PG16, 1 X PG29

rotork

IQ10 (LTHW) DATA

Date 300301 Scale 1:10