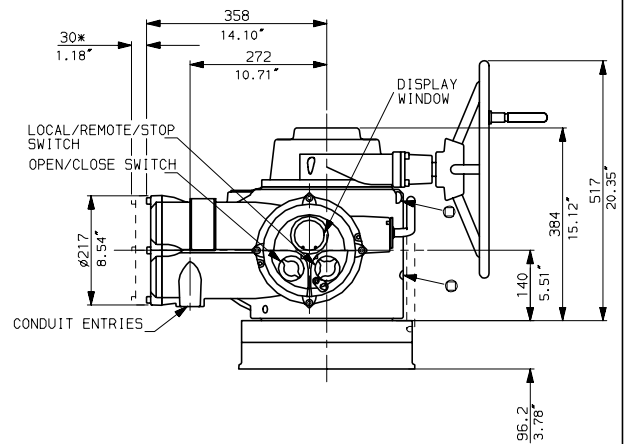
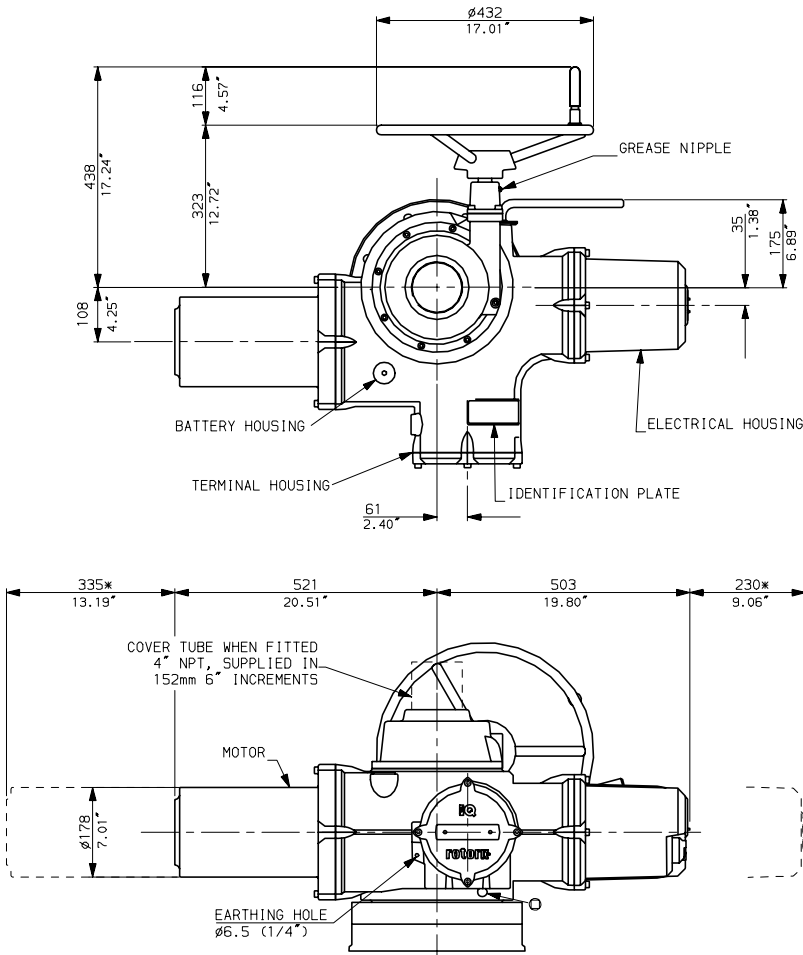


IQ91 BASES

IQ95 BASES

**rotork** Rotork Controls Ltd.  
Bath, England BA1 3JG  
Bath (01225)733200  
IQ91+95 BASE+COUPL  
Date 010204 Scale 1:8

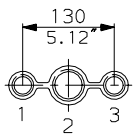
# IQ95 WITH SIDE HANDWHEEL



## NOTES

F30 Z and FA30 Z Bases (Thrust) are detailed to suit the relevant Coupling arrangement available for IQ95.

## CONDUIT ENTRIES



Nos. 1 & 3 TAPPED 1" NPT  
 No. 2 TAPPED 1 1/2" NPT  
 STANDARD ALTERNATIVES IF SPECIFIED  
 2 X M25, 1 X M40  
 2 X PG16, 1 X PG29

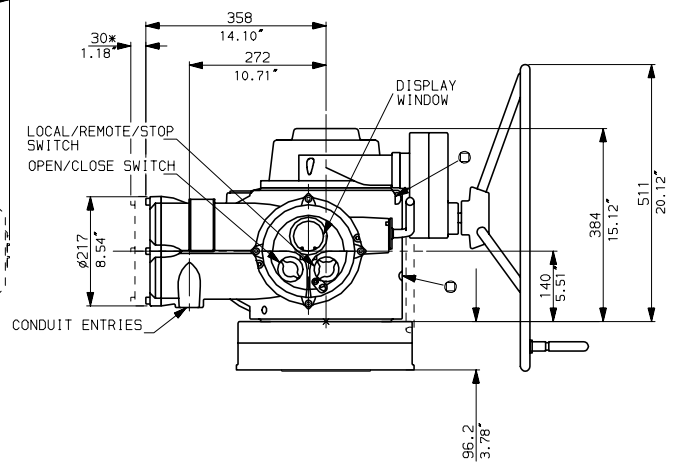
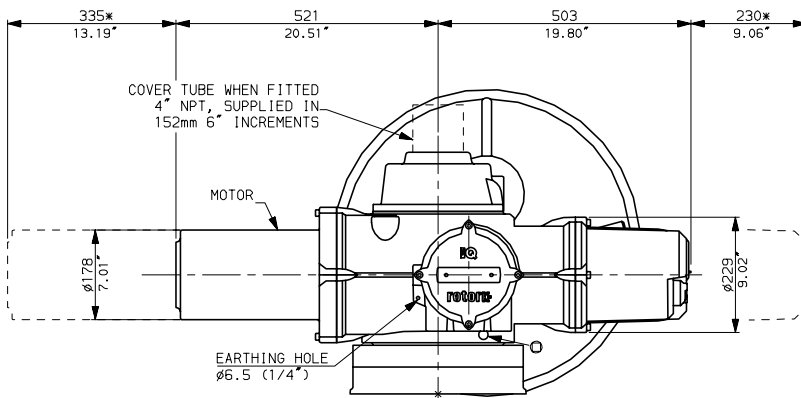
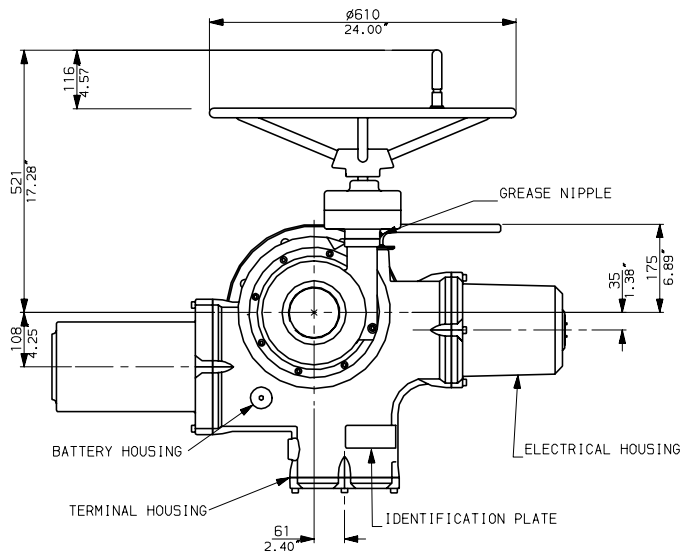
**rotork**

IQ95 (SHW) DATA

Date 020401

Scale 1:15

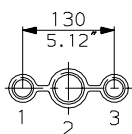
# IQ95 WITH OPTIONAL SPURRED SIDE HANDWHEEL



## NOTES

F30 Z and FA30 Z Bases (Thrust) are detailed to suit the relevant Coupling arrangement available for IQ95.

## CONDUIT ENTRIES



Nos. 1 & 3 TAPPED 1" NPT  
 No. 2 TAPPED 1 1/2" NPT  
 STANDARD ALTERNATIVES IF SPECIFIED  
 2 X M25, 1 X M40  
 2 X PG16, 1 X PG29

**rotork**

IQ95 (SSH) DATA

Date 020401

Scale 1:15