



MT-6210 POSITION INDICATION METER

Interconnect the Meter Readout as shown on the installation wiring drawing. Apply power to the proper terminals.

When interconnected, the meter will increase in reading as the voltage increases from terminal 1 to terminal 2. When the MT-6210 Meter Readout is connected for use with a 120 Vac power source the direction of the meter reading may be reversed by reversing the leads between terminal 1 and the remote sensing potentiometer and between terminal 4 and the remote sensing potentiometer.

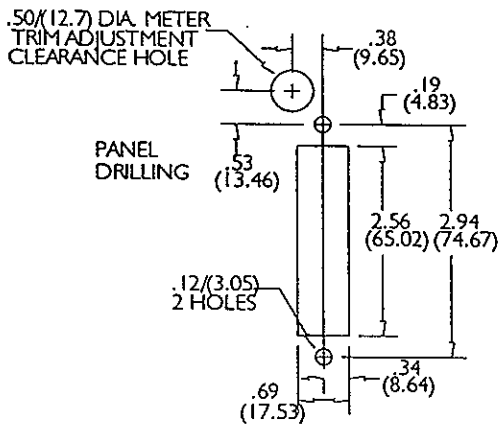
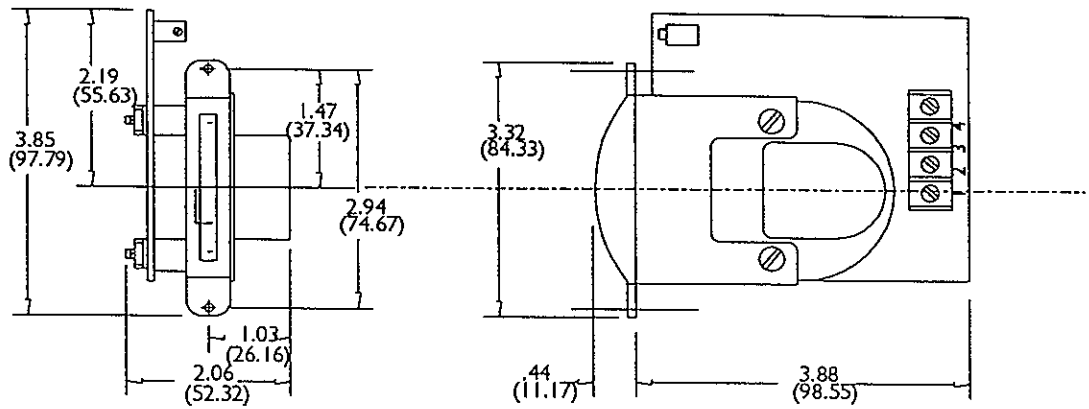
When the MT-6210 Meter Readout is connected for use with an external D.C. Power Source, the direction of the meter reading may be reversed by using the alternate connection shown.

To adjust the meter for zero and full position, the following steps should be taken:

WARNING SHOCK HAZARD:

When meter is used with 120 Vac, potentiometer excitation voltage is not isolated from 120 Vac input power. Potentiometer should be handled with extreme caution.

1. Electrically or manually drive the actuator to the desired actuator zero position. This may or may not be a zero indication.
2. Loosen the three (3) pan head screws on potentiometer mounting plate in the actuator. Slowly, turn actuator potentiometer until meter indicates "0". Adjusting the potentiometer to below the zero setting may cause the meter to jump to its maximum indication. With the meter indicating "0", tighten the three (3) pan head screws on actuator potentiometer mounting plate.
3. Electrically or manually drive the actuator to the desired maximum actuator position.
4. Remove the plug from front panel mount of MC-6210. With a screw driver, turn the trim potentiometer, located just behind the front panel, in a CW direction until the pointer indicates full scale on the meter. Replace plug in the panel when completed.



DIMENSIONS = INCHES
(MM)

Typical meter connections for use with potentiometer connected to Jordan amplifier or external DC power source.

Typical meter and potentiometer connection for use with 120 VAC power source only.
CAUTION - Position potentiometer is connected to line voltage.

