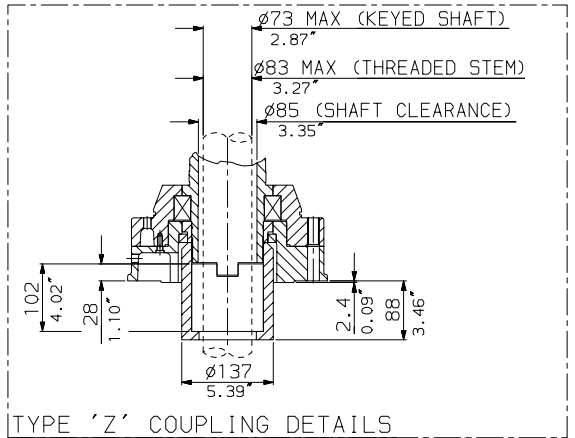
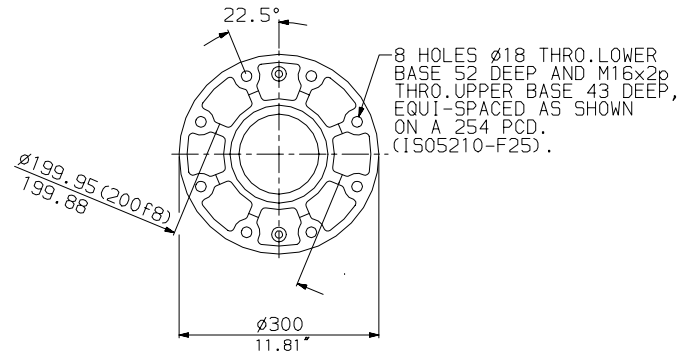


TYPE 'A' COUPLING DETAILS

IQ70 THRUST BASES

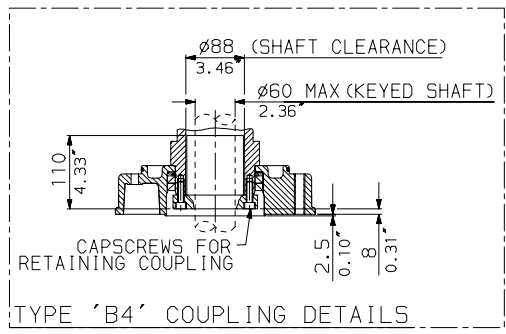


TYPE 'Z' COUPLING DETAILS

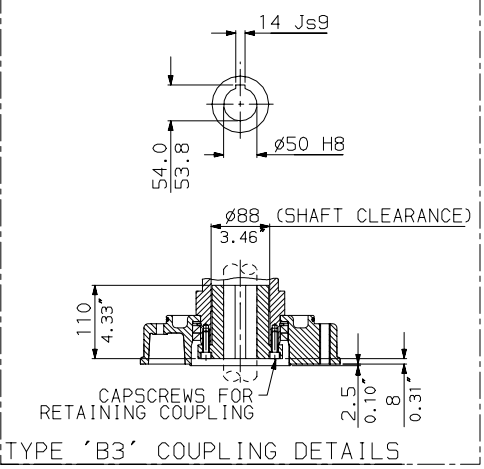


F25 BASE DETAILS FOR 'A' & 'Z' COUPLINGS

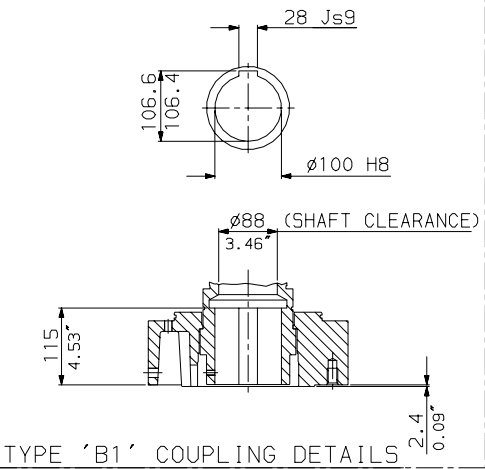
IQ70 NON-THRUST BASES



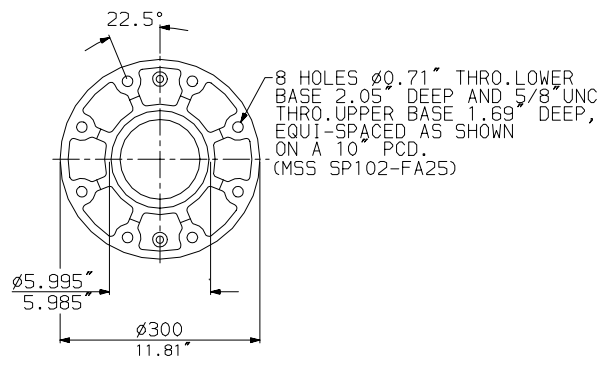
TYPE 'B4' COUPLING DETAILS



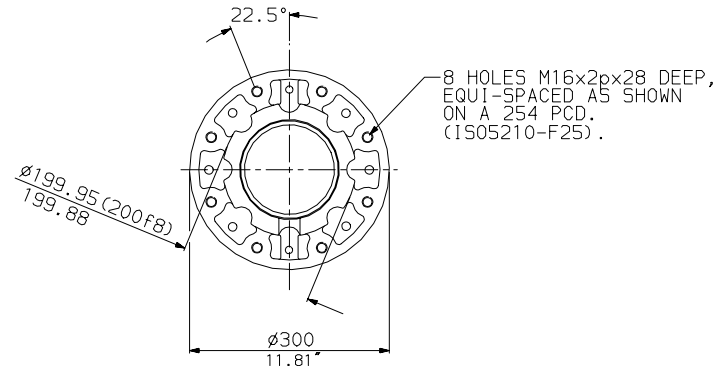
TYPE 'B3' COUPLING DETAILS



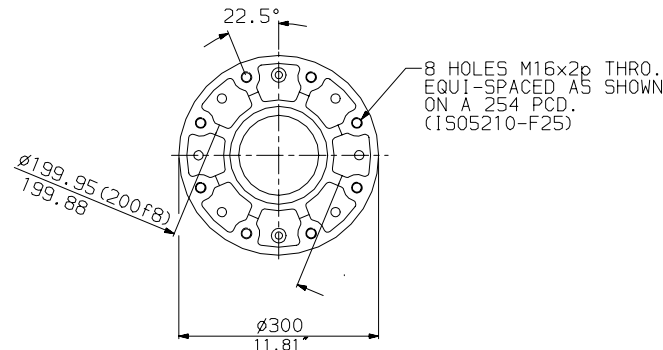
TYPE 'B1' COUPLING DETAILS



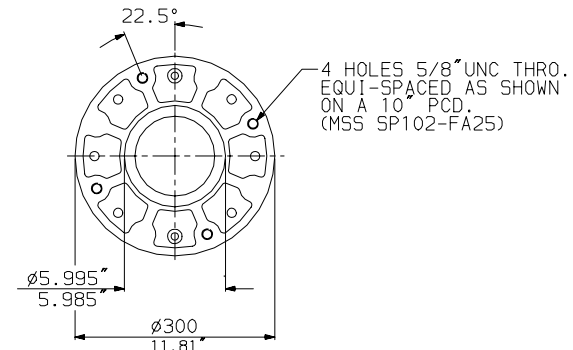
FA25 BASE DETAILS FOR 'A' & 'Z' COUPLINGS



F25 BASE DETAILS FOR 'B1' COUPLING

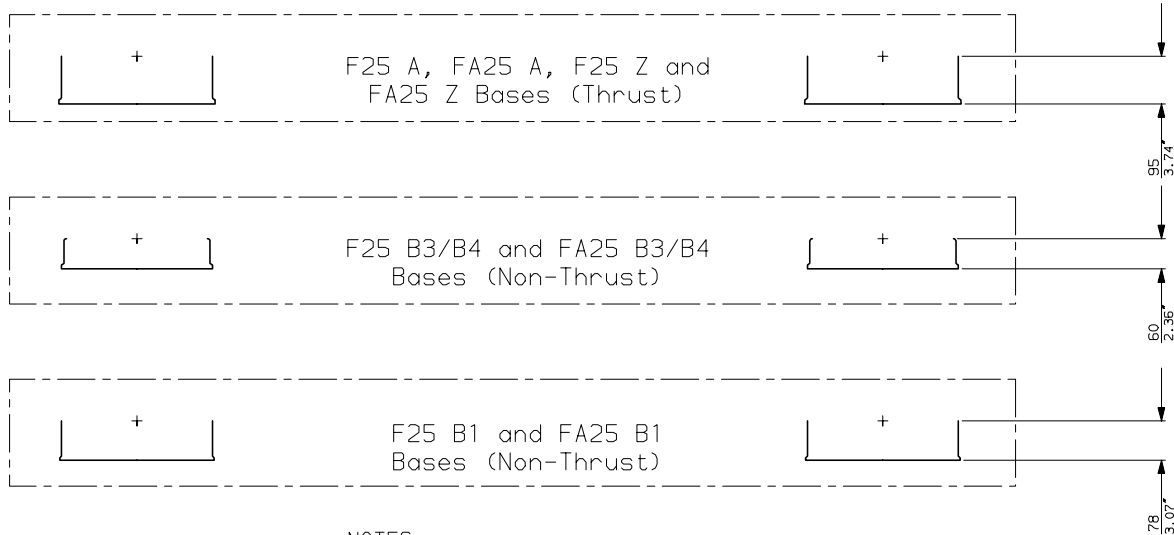
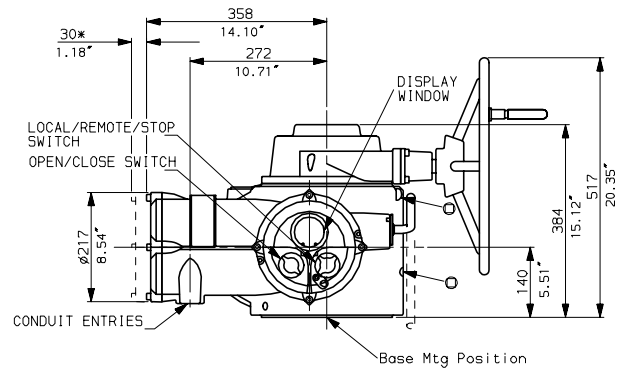
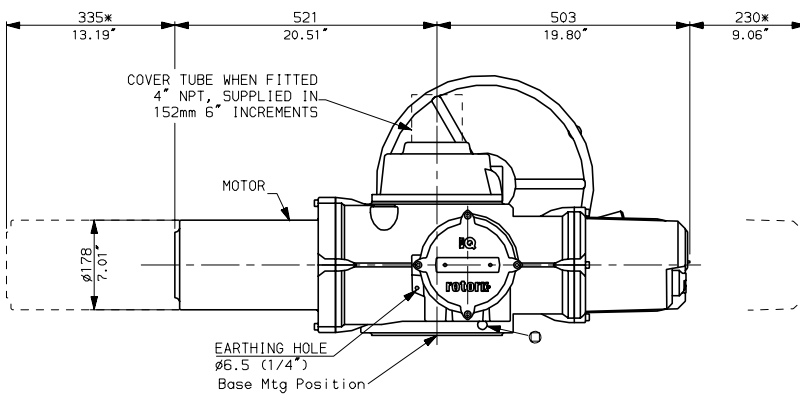
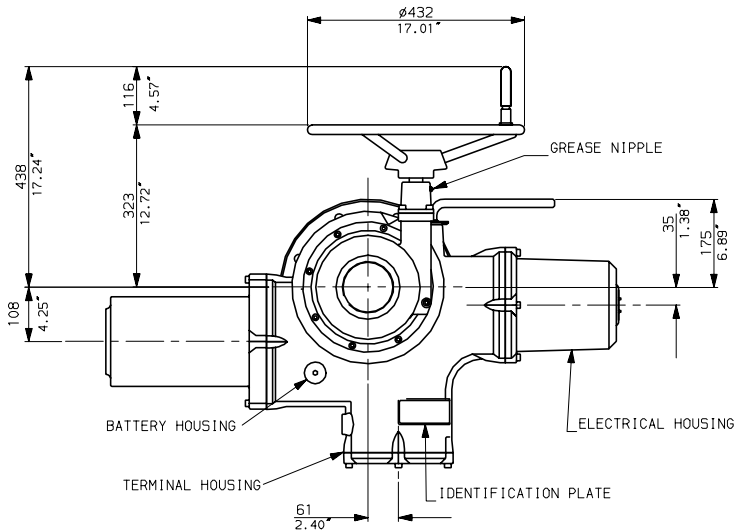


F25 BASE DETAILS FOR 'B3' & 'B4' COUPLING



FA25 BASE DETAILS FOR 'B3' & 'B4' COUPLING

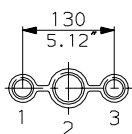
IQ70 WITH SIDE HANDWHEEL



NOTES

Three BASE options are detailed to suit the relevant Coupling arrangement. The required BASE for the SIDE & END views should be loaded to position indicated.

CONDUIT ENTRIES



Nos.1 & 3 TAPPED 1" NPT
No.2 TAPPED 1 1/2" NPT
STANDARD ALTERNATIVES IF SPECIFIED
2 X M25, 1 X M40
2 X PG16, 1 X PG29

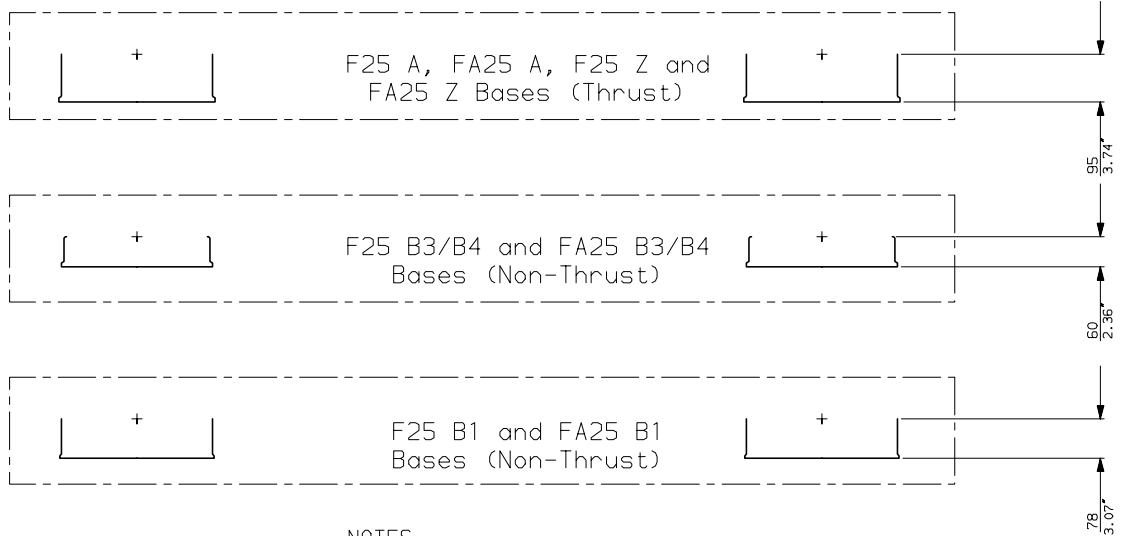
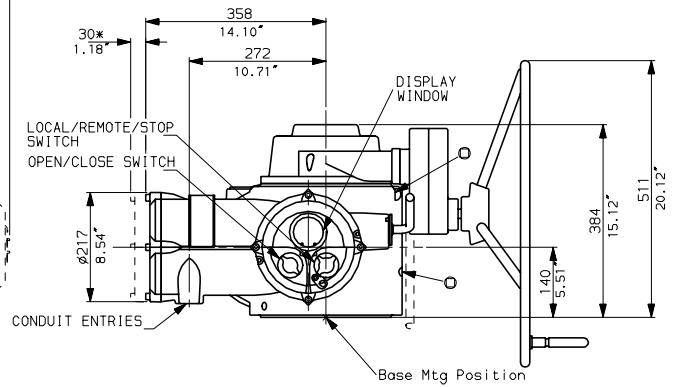
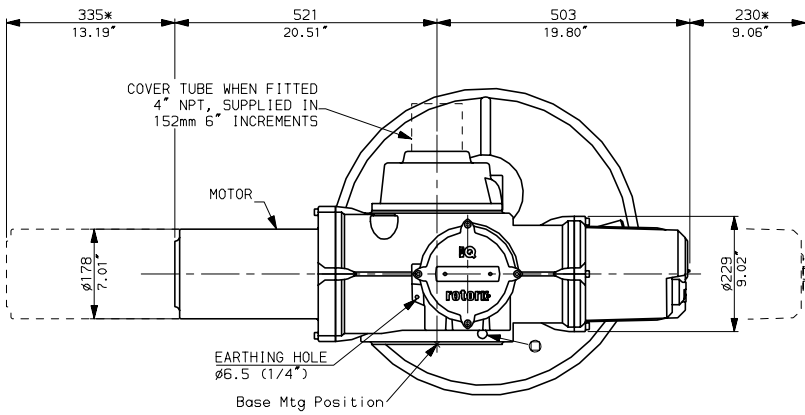
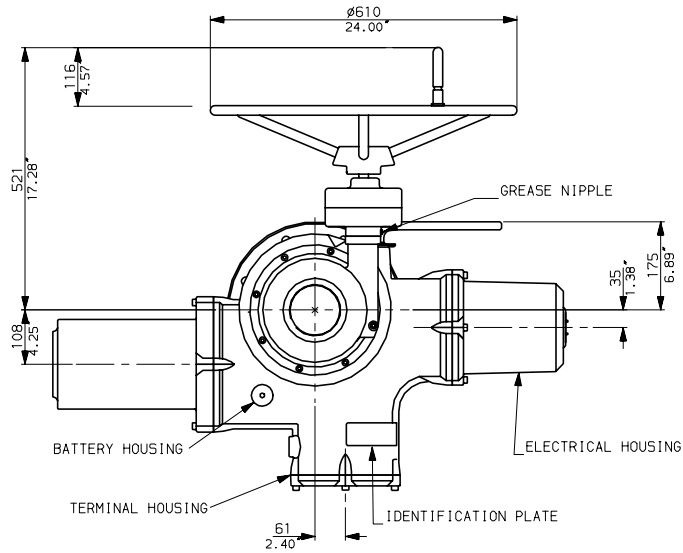
rotork

IQ70 (SHW) DATA

Date 250403

Scale 1:15

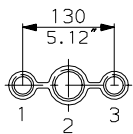
IQ70 WITH OPTIONAL SPURRED SIDE HANDWHEEL



NOTES

Three BASE options are detailed to suit the relevant Coupling arrangement.
The required BASE for the SIDE & END views should be loaded to position indicated.

CONDUIT ENTRIES



Nos.1 & 3 TAPPED 1" NPT
No.2 TAPPED 1 1/2" NPT
STANDARD ALTERNATIVES IF SPECIFIED
2 X M25, 1 X M40
2 X PG16, 1 X PG29

rotork

IQ70 (SSH) DATA

Date 250403

Scale 1:15