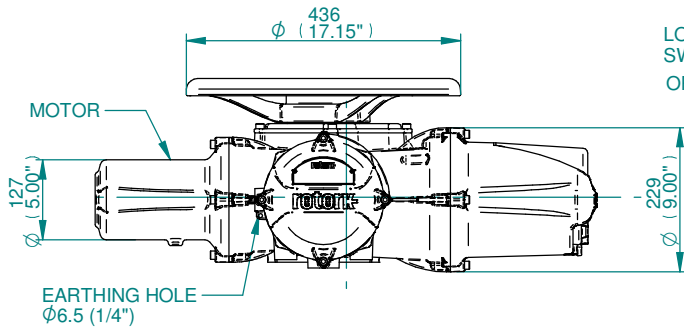


BATTERY HOUSING
 TERMINAL HOUSING
 ELECTRONICS COVER
 IDENTIFICATION PLATE

COVER TUBE SUPPLIED
 IN 150 (6") & 300 (12") LGTH'S
 THEN IN 300 (12") INCREMENTS
 UP TO 1500 (60") LG.

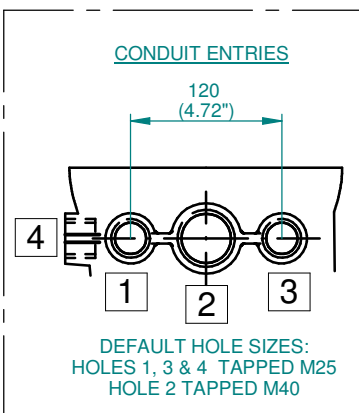
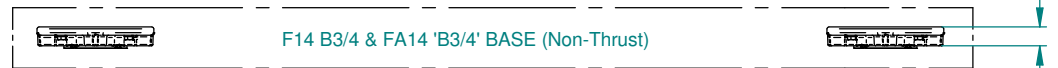


LOCAL/REMOTE/STOP
 SWITCH
 OPEN/CLOSE SWITCH

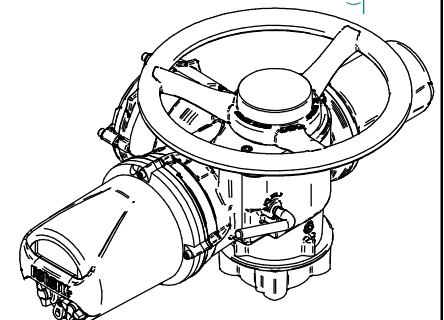
DISPLAY WINDOW

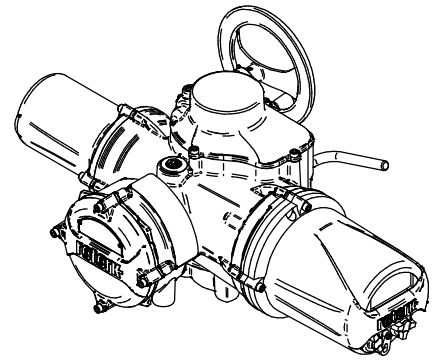
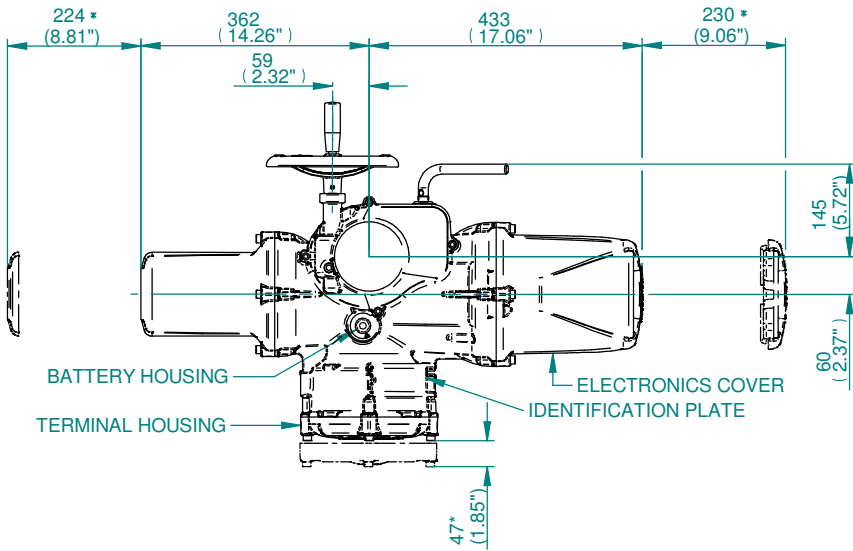
CONDUIT ENTRIES

BASE MTG POSITION

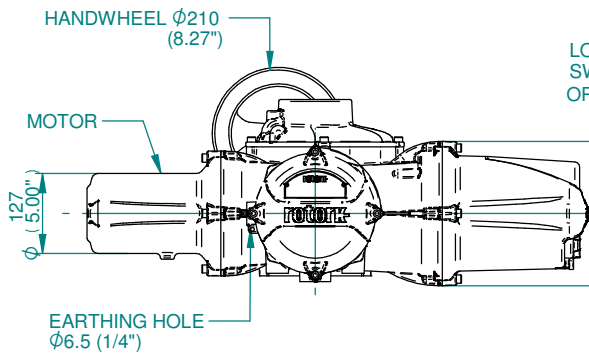


- NOTES**
1. FIVE BASE OPTIONS ARE DETAILED TO SUIT THE RELEVANT COUPLING ARRANGEMENT.
 2. THE REQUIRED BASE FOR THE SIDE & END VIEWS SHOULD BE LOADED TO MTG POSITION INDICATED.
 3. ** REMOVAL ALLOWANCE REQUIRED.

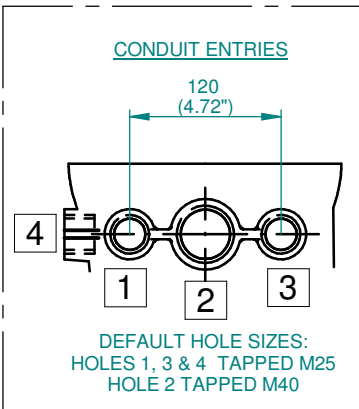
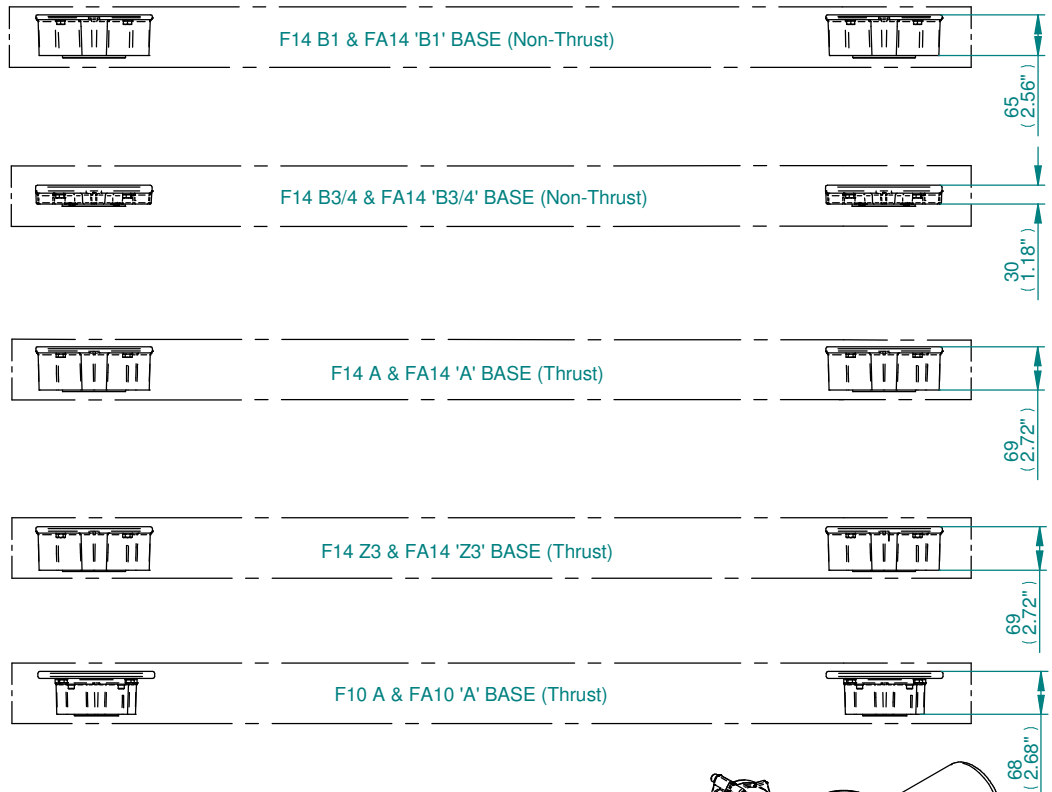
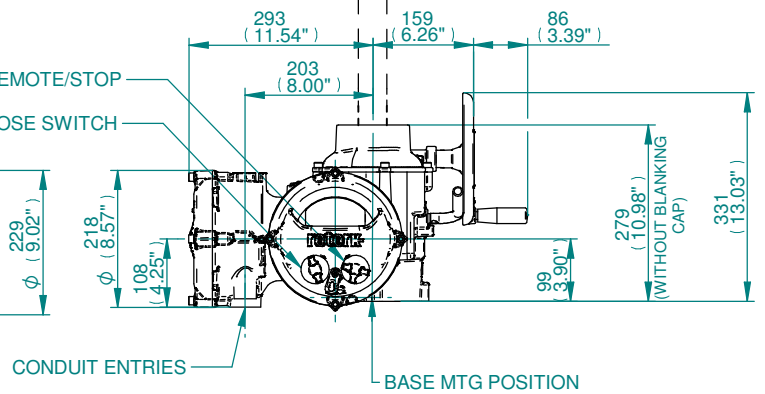




COVER TUBE SUPPLIED IN 150 (6") & 300 (12") LGTH'S THEN IN 300 (12") INCREMENTS UP TO 1500 (60") LG.

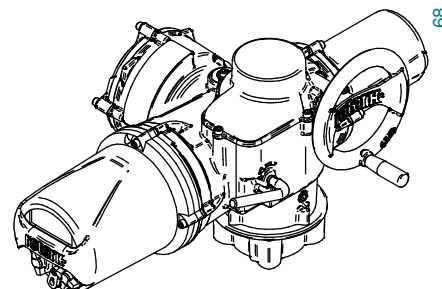


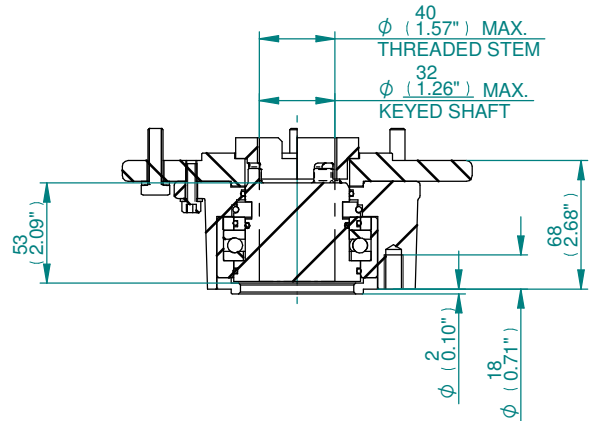
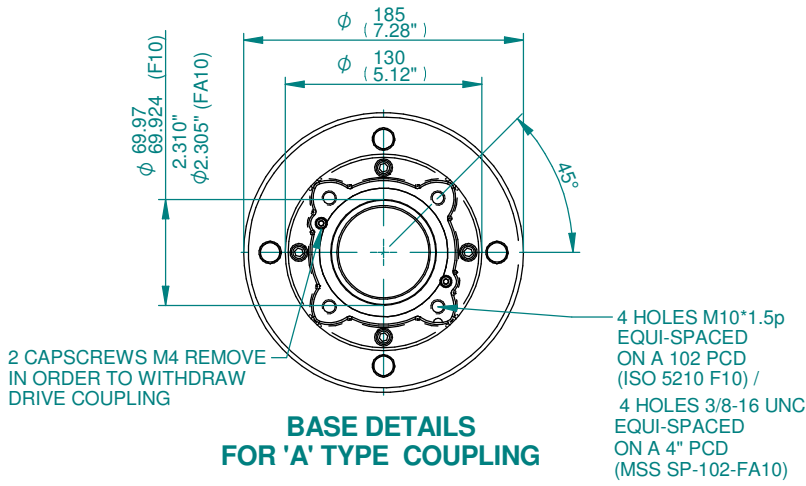
LOCAL/REMOTE/STOP SWITCH
OPEN/CLOSE SWITCH



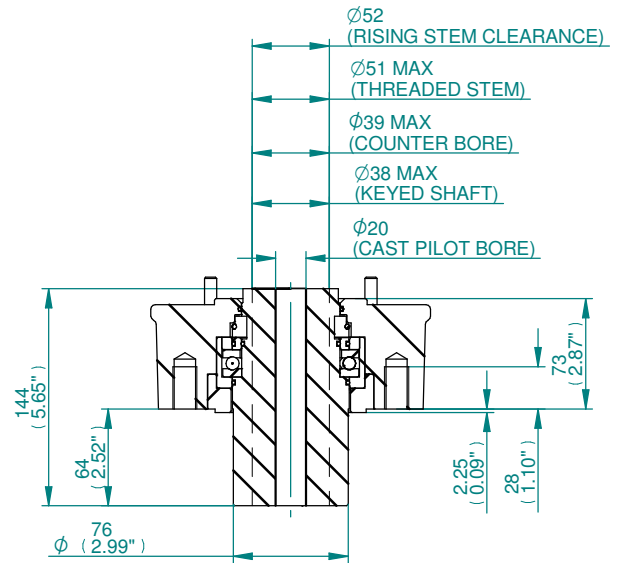
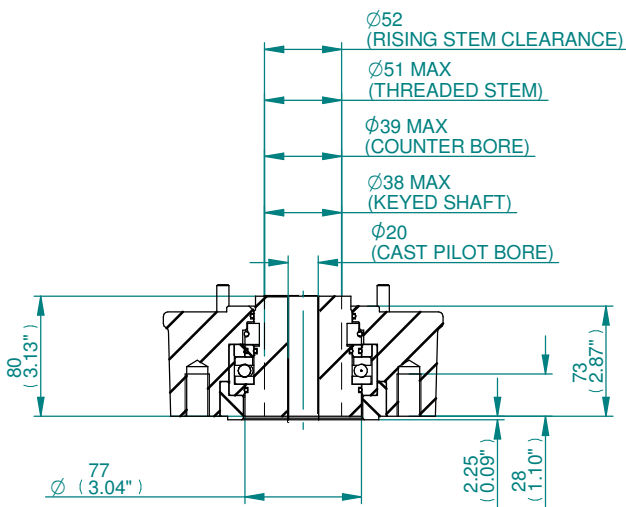
NOTES

1. FIVE BASE OPTIONS ARE DETAILED TO SUIT THE RELEVANT COUPLING ARRANGEMENT.
2. THE REQUIRED BASE FOR THE SIDE & END VIEWS SHOULD BE LOADED TO MTG POSITION INDICATED.
3. ** REMOVAL ALLOWANCE REQUIRED.

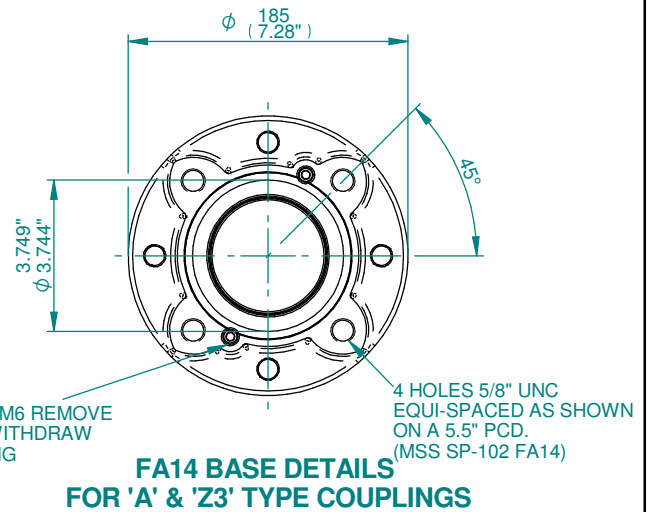
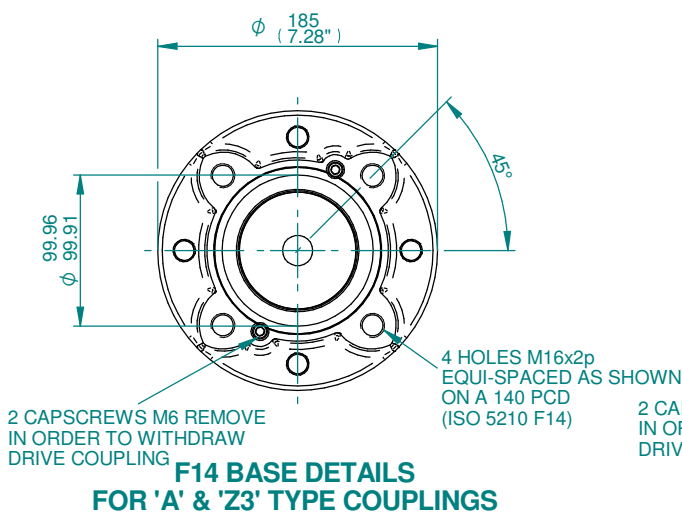




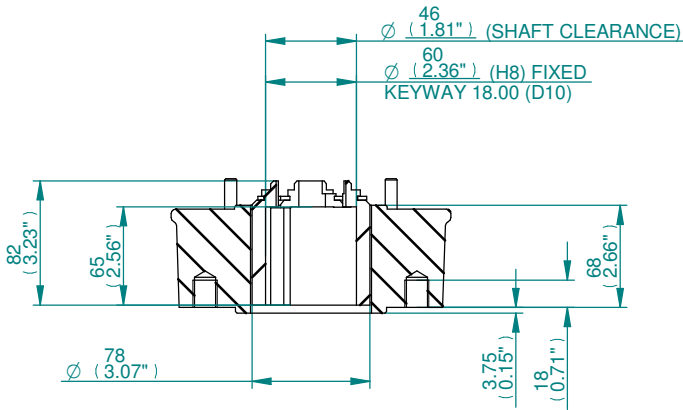
IQ3 SIZE 19 F10 & FA10 THRUST BASES



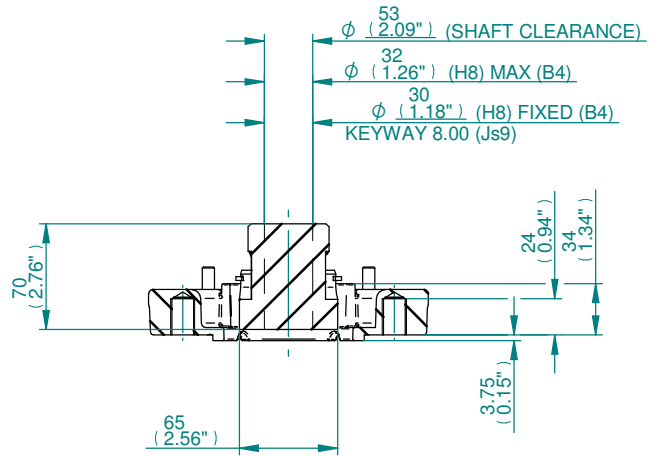
NOTE : COUPLINGS WITHOUT PILOT BORE AVAILABLE IF SPECIFIED WITH ORDER.



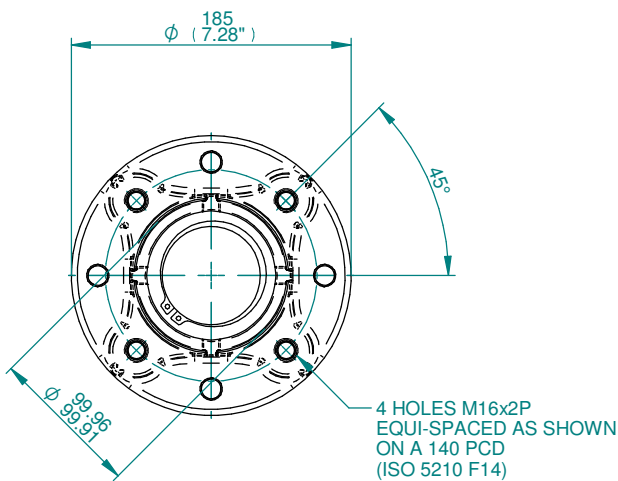
IQ3 SIZE 19 F14 & FA14 THRUST BASES



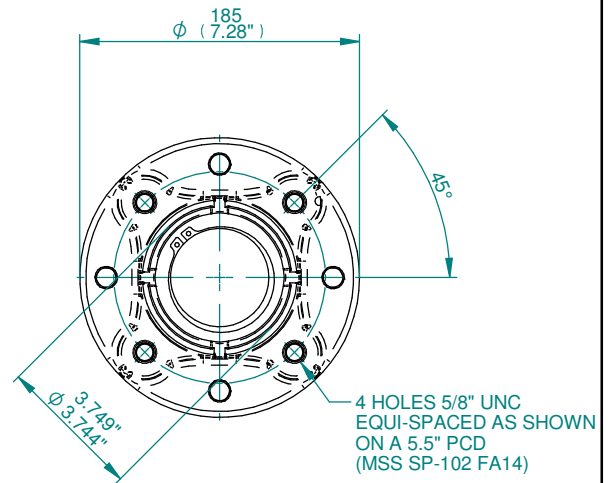
TYPICAL 'B1' COUPLING DETAILS



TYPICAL 'B3/B4' COUPLING DETAILS



F14 BASE DETAILS FOR 'B1' & 'B3/B4' COUPLINGS



FA14 BASE DETAILS FOR 'B1' & 'B3/B4' COUPLINGS

**IQ3 SIZE19 F14 & FA14
NON-THRUST BASES**