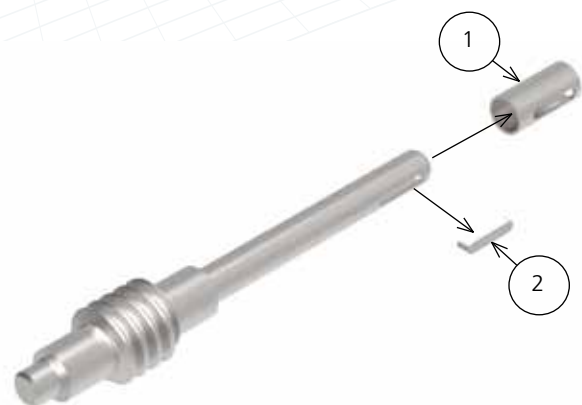


F10 ISO Standard Input Shaft

Application

In order to provide the ISO Standard F10 input shaft, for gearboxes without ISO shafts as standard, a modification to the Rotork standard input shaft has been implemented using a removable shaft adapter and a modified key. This is available for the IW3 & IW4 gearboxes.

The original shafts do not require any changes, as the F10 adaption slips over the existing shaft end with the original key removed. The key is replaced with the modified key which is designed to locate the adaptor both axially and radially. The resultant assembly is ISO compliant offering the standard 20mm shaft and 6mm key and the maximum input and output torques are unaffected. The adaptation therefore allows the standard gearbox model to meet both the existing Rotork requirements, and any competitor brand requirements which comply with ISO standards.



Material Specification

Part	Description	Material	
		IW3	IW4
1	Shaft Sleeve	STEEL BS970 605M36T or GB3077-88 40Cr Rm 850 to 1000 N/mm ² , Re min 680 N/mm ² , 248 to 302 HB	
2	Extended Key	KEY STEEL TO BS 4235 PART 1 or C45	STEEL BS970 817M40T or GB3077-88 40Cr Rm 850 to 1000 N/mm ² , Re min 680 N/mm ² , 248 to 302 HB

Other materials options for the key or sleeve currently do not exist.

Technical Data

Gearbox	Ratio	Input Shaft Diameter (mm)					
		MAN	F10	F14	F16	F25	F30
IW3	40:1 & 70:1	15	15 & 20	-	-	-	-
IW4	40:1 & 70:1	17	17 & 20	-	-	-	-

Type	Ratio	Output torque Nm (ft-lb)	M.A. ±10%	Weight kg (lb)	Input Options
IW3	40:1	1085 (800)	15	11 (24)	15mm & 20mm F10 / FA10
IW3	70:1	813 (600)	23	11 (24)	15mm & 20mm F10 / FA10
IW4	40:1	2440 (1800)	15	22 (49)	17mm & 20mm F10 / FA10
IW4	70:1	2034(1500)	23	22 (49)	17mm & 20mm F10 / FA10



Output options as per IW Datasheet.

Rotork Gears UK
9 Brown Lane West
Holbeck
Leeds
West Yorkshire LS12 6BH
England

tel +44 (0)113 2567922
email sales@rotorkgears.com

Rotork Gears BV
Nijverheidstraat 25
7581 PV Losser
P.O. Box 98
7580 AB Losser
The Netherlands

tel +31 (0)53-5388677
fax +31 (0)53-5383939
email info@rotorkgears.nl

Rotork Gears Americas
1811 Brittmoore
Houston
Texas 77043
USA

tel +1 713 983 7381
fax +1 713 856 8022
email gears@rotorkgears.com

Rotork Gears Shanghai
No. 260 Lian Cao Road
Xin Mei Urban Industrial Park
Min Hang District
Shang Hai 201108
China

tel +86-21-33236200
fax +86-21-64348388
email info@rotorkgears.com.cn

Rotork Gears S.R.L.
Viale Europa 17
20090 Cusago (MI)
Italy

tel +39 0290 16711
fax +39 0290 390368
email rg srl.sales@rotork.com

Rotork Gears India
165/166, Bommasandra,
Jigani Link Road,
Kiadb Industrial Area,
Anekal Thaluk, Jigani Hobli,
Bangalore 562106

tel +91 80 3098 1600
fax +91 80 3098 1610
email sales@rotork.co.in

Rotork Valvekits
Brookside Way
Nunn Park
Huthwaite
Nottinghamshire NG17 2NL
England

tel +44 (0)1623 440211
fax +44 (0)1623 440214
email sales@rotorkvalvekits.com

Rotork Valvekits Americas
501 South 12th Street
Broken Arrow, OK
74012
USA

tel +1 (918) 259-8100
fax +1 (918) 259-9167
email usasales@rotorkvalvekits.com

Roto Hammer Industries
2804 W. 40th St.
Tulsa, Oklahoma
74107
USA

tel +1 918 446 3500
fax +1 918 446 6218
email sales@rotohammer.com

A full listing of our worldwide sales and service network is available on our website at

www.rotork.com