

(1) **EU - Type Examination Certificate**

(2) Equipment and protective systems intended for use in potentially explosive atmospheres – Directive 2014/34/EU

(3) EU - Type Examination Certificate Number

EPS 16 ATEX 1 141 X

Revision 1

(4) Equipment: Electro-pneumatic valve positioner YT-1000... and YT-1050...

(5) Manufacturer: Young Tech Co., Ltd.

(6) Address: 81, Hwanggeum-ro, 89 Beon-gil, Yangchon-eup, Gimpo-si, Gyeonggi-do, Republic of Korea

(7) This equipment and any acceptable variation thereto are specified in the annex to this certificate and the documentation therein referred to.

(8) Bureau Veritas Consumer Products Services Germany GmbH, notified body No. 2004 in accordance with Article 21 given in the Directive 2014/34/EU of the European Parliament and of the Council of 26 February 2014, certifies that this equipment has been found to comply with the essential health and safety requirements relating to the design and construction of equipment and protective systems intended for use in potentially explosive atmospheres, given in Annex II of the Directive. The examination and test results are recorded in the confidential documentation under the reference number 16TH0258.

(9) Compliance with the essential health and safety requirements has been assured by compliance with:

EN 60079-0:2012 + A11:2013

EN 60079-1:2014

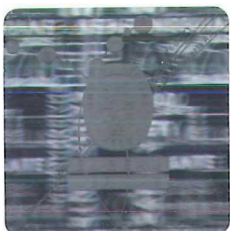
EN 60079-18:2015

(10) If the sign "X" is placed after the certificate number, it indicates that the equipment is subject to special conditions for safe use specified in the annex to this certificate.

(11) This EU - Type Examination Certificate relates only to the design and examination of the specified equipment in accordance with Directive 2014/34/EU. Further requirements of this Directive apply to the manufacture of this equipment and its placing on the market. Those requirements are not covered by this certificate.

(12) The marking of the equipment shall include the following:

 II 2G Ex db mb IIB T5 Gb



Certification department of explosion protection

Nuremberg, 2016-12-15

D. Zitzmann

(13)

Annex

(14) EU - Type Examination Certificate EPS 16 ATEX 1 141 X

Revision 1

(15) Description of equipment:

The electro-pneumatic valve positioners model YT-1000... and YT-1050... are used to control actuators in process control applications.

These electro-pneumatic valve positioners are also NEMA 4X.

Ambient temperature range: $-20\text{ °C} \leq T_{\text{amb}} \leq +60\text{ °C}$

The instructions provided with the equipment shall be followed in detail to assure safe operation.

Electrical data:

Rated voltage: 1 – 5 Vdc

Input current: 4 – 20 mA

(16) Reference number: 16TH0258

(17) Special conditions for safe use:

For information on the dimensions of the flameproof joints the manufacturer shall be contacted.

(18) Essential health and safety requirements:

Met by compliance with standards.

Certification department of explosion protection

Nuremberg, 2016-12-15

