

***Your partner for  
automation and control***

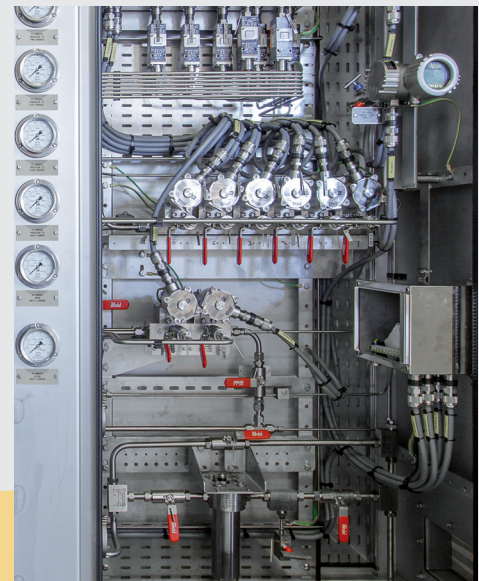
*Automation and control are the key areas of activity for the market-leading companies that make up **Rotork Instruments**. These companies – each with their own area of expertise – enable Rotork Instruments to present innovative and elegant design solutions to the marketplace. As a specialist manufacturer of products for flow control, pressure control, flow measurement and pressure measurement serving diverse duties and a wide variety of applications, Rotork Instruments delivers solutions that are trusted wherever there is a need for high precision and reliability.*

### **Bifold**

*Bifold is a widely recognised leader in the design and manufacture of hydraulic and pneumatic stainless steel directional control valves and accessories for hazardous and corrosive environments.*

Bifold also has market leading technology in areas that include the development of solenoid valves and associated equipment with ultra-low power requirements. Within the Bifold Group, Marshalsea Hydraulics, is a leading designer and manufacturer of high quality pumps and valves and provides a range of stainless steel pressure intensifiers for challenging applications. Bifold Orange instruments (formerly part of Orange Instruments Limited) has broad expertise in electronic control and valve positioning for the hazardous area valve and pump sectors.

**Bifold solenoid manifolds installed on a FPSO topside hydraulic power unit located offshore Brazil.**



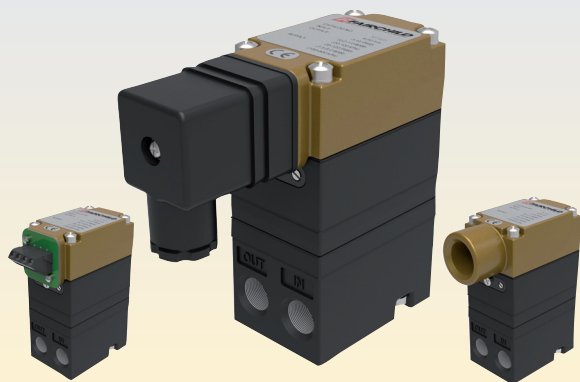
### **Rotork Midland**

*Rotork Midland is internationally known as a manufacturer of pneumatic and hydraulic control equipment with a reputation for high quality, reliability and innovation.*

Rotork Midland products are renowned for their superior leak proof design and high functionality, achieved through attention to detail throughout the process. Whether the application calls for high accuracy or simply rugged duty in extreme conditions, Rotork Midland has a proven track record for reliable field operation and strives to provide innovative solutions to simplify the task of valve control packaging.

**Rotork Midland control panel and cylinders providing a fully automated system for opening and closing doors on a state-of-the-art biomass freight wagon.**





**Rotork Fairchild T7500 I/P transducers with (left to right) terminal block, DIN plug and NPT electrical connections (not to scale).**

### Fairchild

*The Fairchild range of industrial control products offers one of the largest varieties of precision pneumatic and electro-pneumatic control devices available for process and OEM applications.*

These products are valued by customers for their precise, accurate and advanced capabilities. Regulators, boosters and I/P transducers provide the degree of control that each different application demands, including models which are designed to handle exceptionally high pressure and deliver the greatest flow rates. Fairchild has recently extended its capabilities with the launch of a new range of compact low pressure I/P transducers for instrument, analytical and scientific control applications.

Precise pressure control, where output pressures must be accurately held at low pressures down to 70 mBar (1 psi), has traditionally been a difficult task for industrial instrumentation. The new Fairchild T7500 range of transducers is specifically designed for these low pressure control systems with set point accuracy of 0.1%, even at pressures of less than 100 mBar. T7500 transducers accept supply pressures between 1.3 and 2 Bar (20 and 30 psi) with mA or VDC control signals to deliver critical high accuracy output ranges of 0-350 mBar (0-5 psi) and 0-1 Bar (0-15 psi). Flow configurations of 85 l/m or 200 l/m suit a wide range of application requirements. In addition, the T7500 can be ordered with DIN plug, NPT conduit or terminal block electrical connections styles to suit assembly requirements.

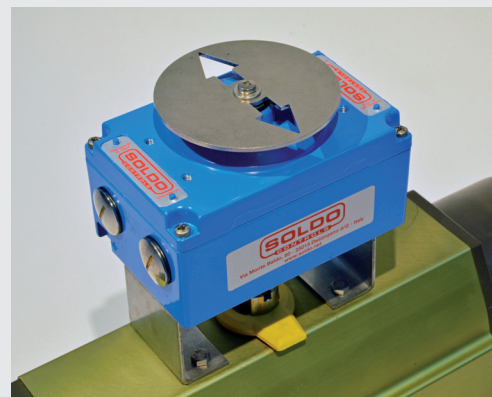
Applications in test and medical equipment, leak detection equipment and other precise scientific areas are ideal for the T7500 transducers. The rugged cast aluminium construction and vibration resistant internal componentry is designed to withstand the rigors of both portable and stationary mounted equipment often found in medical and test situations.

### Soldo

*The Soldo range of limit switchboxes, proximity sensors, and accessories offers a variety of options. Soldo specialises in the design and manufacture of control accessories for valve automation, providing high quality products and services that guarantee a link between the control room and automated process valves.*

Product development programmes ensure Soldo is always ready for new markets and applications and able to meet or exceed customer requirements. Soldo products are valued by customers for their advanced design and capabilities, ranging from cost effective, when price is a concern, to corrosion resistant and explosionproof, when harsh environments are encountered. Soldo products provide the protection and automation that each application demands. The unique split shaft design allows installation where space is a factor and where a low profile limit switchbox is not preferred. Soldo limit switches also have easy-set 3 degree cams for independent tool free adjustment. Pre-wired PCB switch modules ensure installation is worry free and allows easy installation and wiring directly into terminal strips. The pre-wired boards are conformal coated for environmental protection. Soldo also offers a full line of mounting brackets for all models that do not come with an integral mounting kit. A recent addition to the Soldo range is a high temperature extension to the LSB range of compact limit switchboxes for valves and dampers. Manufactured with an aluminium or stainless steel enclosure, the new switchbox has been tested for operation in temperatures up to 250°C for 2 hours or 300°C for 70 minutes. High temperature applications include tunnel ventilation dampers, HVAC plant rooms and other building services environments.

Teflon coated stainless steel bushings ensure smooth and low friction shaft rotation, whilst precision end-of-travel switches guarantee normally open (NO) and normally closed (NC) logics. Standard features also include the Soldo twin shaft design, enabling easy access to switches and terminals, and rugged enclosure coatings for challenging environments. Ceramic terminals and special wiring options complete the compact Soldo design. The range is tested at 250VAC 5A and has a guaranteed mechanical life of one million cycles.



**The LSB switchbox for high temperature applications is a recent addition to the Soldo product range.**



**The YT-3300 is one of a range of innovative smart positioners manufactured by YTC.**

## YTC

*The YTC product line includes pneumatic positioners ranging from base level units to sophisticated electro-pneumatic smart positioners. Available in both linear and rotary configurations, these engineered products are built to the highest quality standards to provide dependable long term performance.*

Aluminium or stainless steel housings are designed for the most challenging environments. YTC designs utilise rugged torque motor style operation to provide reliability in harsh temperatures and environments. Whether the application calls for highly accurate automation or simply rugged duty in extreme conditions, YTC has numerous positioner alternatives.

Valve monitoring is further facilitated by internal or external options available for any positioner unit. YTC also provides a host of accessory products to meet the specification of complete pneumatic valve systems. As a worldwide supplier, YTC has the track record, expertise and requisite pedigree to meet the needs of global engineering teams. The research and development team designs for performance, quality and compactness, with an emphasis on cost effective features.

## M&M

*M&M International Srl adds a complete range of solenoid valve products to the Rotork Instruments division. Established for over 30 years, M&M is a leading manufacturer of general purpose solenoid valves, air actuated piston valves, automatic drain valves, coils and customised instrumentation solutions used throughout the industrial flow control industries.*

Fully integrated in-house manufacturing and product development enable M&M to meet diverse customer needs and applications with an unrivalled service that is focused on flexibility and economy. M&M can satisfy the requirements of global accounts, OEMs and distributors by offering a lean and modular range of standard solenoid valve products and fully customised solutions. The latest product highlights include:

- M&M piston actuated control valves (PAV) with fully integrated positioners, offering a very compact and user-friendly solution, dedicated to the needs of OEMs.
- ATEX Certified Explosionproof piston actuated valves with stainless steel actuators, which can be tailored for use in highly specialised applications (PSA modules, power generation turbines) and fitted with ATEX Certified limit switches.
- ATEX Certified Explosionproof stainless steel solenoid valves with an optional innovative anti-corrosion surface treatment, offering an economical alternative to expensive traditional separated diaphragm configurations.

In addition, M&M has a proven capability for co-operation and partnership with customers for the development of product solutions in industries including chemicals, compressed air, automobiles and food & beverages, amongst others. Since 1979, the name of M&M has been a warranty of expertise, continuous improvement, outstanding service and dedication to customers.



**M&M is a leading manufacturer of instrumentation solutions including solenoid valves and air actuated piston valves.**

As a part of the global Rotork Group, Rotork Instruments maintains manufacturing facilities in USA, England, Italy, Brazil, India, China, Singapore and Korea, complemented by a large network of distribution and support centres.

The Rotork global sales and service network supports all Rotork Instruments products. This network is the biggest global actuation support organisation in the world with direct sales offices and agents in all industrialised countries. Customer service and field support provides quick and effective response to customer requirements. In addition, the Rotork Site Services network is represented throughout the world and provides valuable asset management services and assistance to all industries.